

STEPS



The frame mounted Ranch Hand Steps are made of 1 1/2" pipe. They feature 20" of step area with punch plate that matches the grilles on our Ranch Hand grille guards and front bumper replacements.

RUNNING STEPS

4 step wheel to wheel or 6 step with bed access. 3" top pipe and 1.5" loop pipe. Large surface area for step and 12 gauge punch plate specific to make/model of vehicle which matches Ranch Hand grilles and front bumpers. Outstanding Ranch Hand quality with new purpose and look.



JEEP PRODUCTS



"Jeep Bullnose" fully welded formed channel 1 piece design comes standard with a built in 2" receiver, shackle bracket mounts, and durable powder coat finish. Optional Winch Plate for mounting a number of Warn winches: XD9000, 9.5ti, 9.5si, and the Powerplant HP.



"Horizon Series" Jeep Front & Back Bumpers and Spare Tire Carriers are made of smooth metal with a sleek hammertone finish. Winch capable & optional shackle brackets.



LEGEND BACK BUMPER

"Legend Back Bumper" sets the industry standard. It is V-5 tested to 1000 lb. tongue weight and 10,000 lb. towing capacity or 500 lb. tongue weight and 5000 lb. towing capacity depending on the model. This bumper will accept a bolt on receiver tube (which will reduce the tongue weight to 500 lbs. & the towing capacity to 5000 lbs.) Optional back up/work lights available with 10" drop only. Some makes and models retain factory reverse sensors and factory receiver.



SPORT BACK BUMPER



"Sport Back Bumper" is a durable black powder coated bumper made from formed channel, has diamond plated step plates, and standard backup/work lights. Depending on the model, the end cap has a built in step and some makes and models retain factory reverse sensors. Must be used with the factory receiver.

DUALY BACK BUMPER

"Dually Back Bumper" is a full wrap around rear bumper for Dually model trucks. Available only with a 10" drop and backup/work lights are a standard feature on most models.



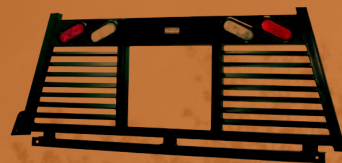
BOLT-ON RECEIVER

Bolt-On Receiver fits the Ranch Hand Legend & Dually Back Bumpers. Adding the bolt on receiver will reduce the tongue weight to 500 lbs and the towing to 5000 lbs. Allows a 2" receiver hitch.



HEADACHE RACK SYSTEM

The Ranch Hand louvered "Headache Rack" comes in two styles: Standard 2" and the Hauler with lights. Both styles are made of heavyduty square tubing with or without window cut and must be installed with short or long rails. Light duty headache rack option available.



Hauler with Lights Window Cut



Full Louvered 2 inch

RAILS

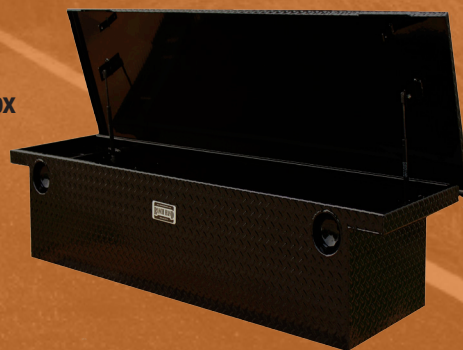
"Bed Rails" are made of 3/16" smooth plate with a glossy black powder coat finish and contours to protect the edge of the truck bed. Optional tie down rail is beveled on each end. These products must be used with the Headache Rack System.



TOOLBOXES

Ranch Hand Tool Box design features include "anti-theft" recessed lock receivers, diamond plate steel, low profile lid, and triple hinged oversized lids.

Universal Low Profile Crossbox



PROUDLY MADE IN THE USA

VERSION 2.14

Please visit Ranchhand.com for the most comprehensive offering of applications in the industry including the part numbers for your specific vehicle's year/make/model.



RANCH HAND
 PO BOX 667
 961 Hwy 95 N
 SHINER, TX 77984
 800-366-9712
 SALES@RANCHHAND.COM
WWW.RANCHHAND.COM



BE ON THE SAFE SIDE

LEGEND FRONT BUMPERS



"Legend Front End Replacement" known for its legendary quality is manufactured with 4" Schedule 40 Pipe and provides maximum protection for your vehicle. It is designed to take an impact both on and off the road and comes standard with a 2" receiver. Field tested in extreme conditions, this is the toughest product on the market today. Most applications retain factory fog lights and tow hooks.

SUMMIT FRONT BUMPERS



"Summit Front End Replacement" is sturdy but lightweight and built with 12 gauge diamond plate steel. The optional H2R (hidden 2" receiver) can be added at any time without having to remove the front bumper replacement. This series also retains the factory fog lights & tow hooks.

WINCH READY FRONT BUMPERS

Formed Channel



GRILLE GUARDS



The "Legend Series Grille Guard" is the most popular heavy-duty grille guard on the market today for full size and mid-size vehicles. Ranch Hand combines durability and protection with sleek lines that compliment your vehicle. Standard features include custom punched grille insert, loop supports, and the highest quality black powder coat finish in the industry.

GRILLE GUARDS



Patented Hidden 2" Receiver (H2R) Shown with Ball Mount



BULLNOSE FRONT BUMPERS

LEGEND SERIES
4" Schedule 40 Pipe

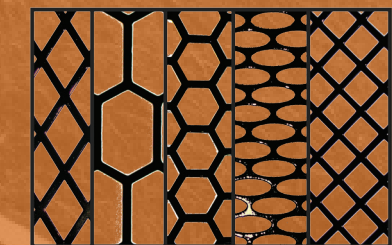


SUMMIT SERIES
12ga Diamond plate



PUSH BAR

"Push Bar" is a great product for those looking for front end protection but minimal product. The uprights extend from top to bottom and can be equipped with optional rubber upright pads. The predrilled light bar holds from 2 to 4 6" lights. Frame mounted for added strength. Perfect for emergency vehicles.



Ranch Hand Grille Inserts are punched to match the appropriate make and model of your vehicle.

The "Bullnose Front End Replacement" has off road styling with 12 gauge contoured skirts to protect the underside of your truck. Off road light tabs standard on all models.